

## Rebound Traffic Bollard

A non-illuminated and passively safe bollard that's designed and independently tested to be fully compliant for use on the UK highway. The standard rebound traffic bollard comes with a D610 Keep Left roundel on the front and plain black back, but there are a number of variations that are available to choose from.

- Full 360° visibility
- Easy to install
- Vinyl sign face
- 100% recyclable shell

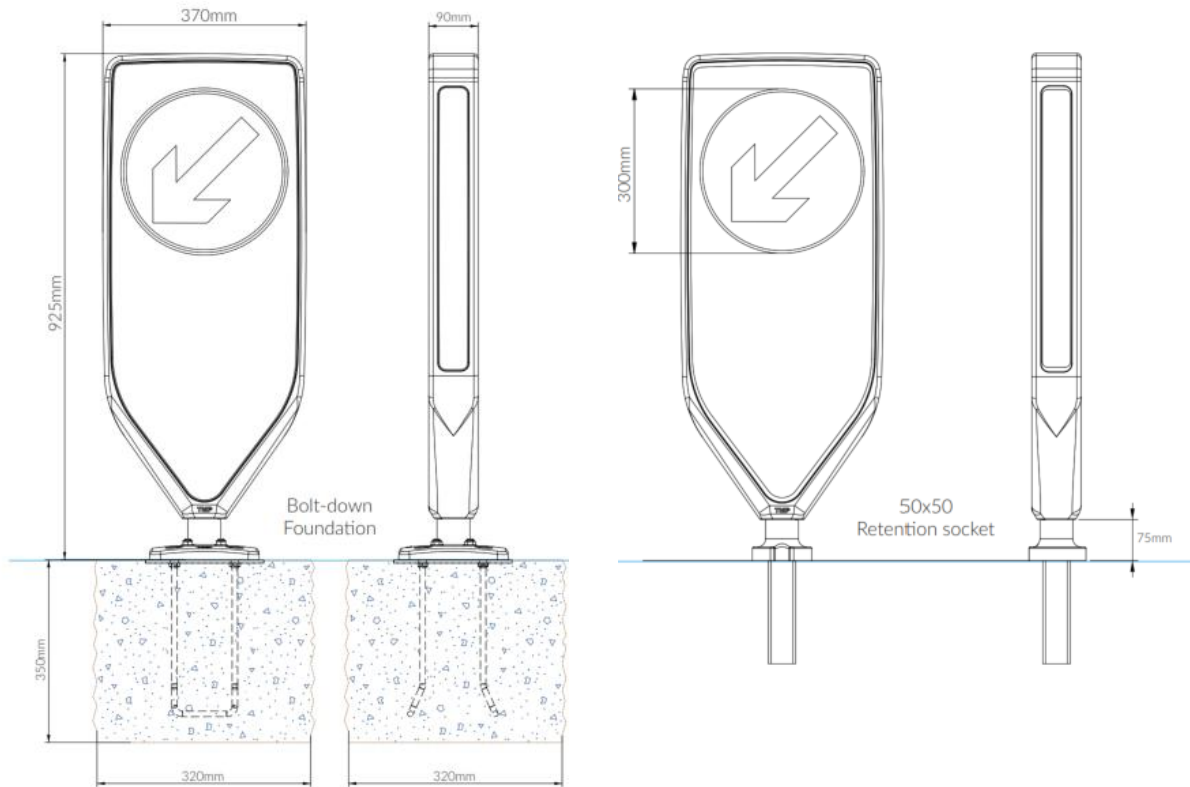
- BS 8442:2015 compliant
- All reflective material meets BS 8408:2005
- Independently MIRA tested
- 12 Year 3M back delamination warranty



<b>Material</b>	Rotationally moulded polyethylene
<b>Colour</b>	Black / White
<b>Protection</b>	Recessed reflective panels & anti-vandal fixings
<b>Corrosive Resistance</b>	SP1/SP2
<b>Installation Options</b>	Foundation cage, retention socket or base light conversion
<b>Maintenance</b>	Maintenance-free (occasional cleaning with mild detergent)
<b>Reflective Material</b>	3M Diamond Grade DG3 Series 4000
	Fully compliant with Class R3B, EN12899-1:2007
<b>Sign Face</b>	300mm (single or double sided)
<b>Front Reflector</b>	332mm wide x 756mm high (Area: 228,024mm <sup>2</sup> )
<b>Rear Reflector (optional)</b>	332mm wide x 756mm high (Area: 228,024mm <sup>2</sup> )
<b>Side Reflector</b>	51.2mm wide x 504mm high (Area: 25,872mm <sup>2</sup> )

<b>BS8442:2015</b>	Fully compliant
<b>BS EN 12767:2007</b>	100:NE:4
<b>BS EN 12767:2019</b>	100-NE-A-R-NS-MD-0
	70-NE-A-R-NS-MD-0
	50-NE-A-R-NS-MD-0
<b>Recyclable</b>	Yes

## Specifications



**PassiveSAFE**<sup>®</sup>  
 Rebounds on impact and fully  
 compliant to BS EN 12767:2019