

# Installation guide

Regent 30 & 50 litre  
Wall mounting



litter products



**Cleaning** Products should be rinsed with clean water and then washed with a mild detergent solution using a bristle brush or sponge. Care should be taken not to apply undue pressure that may damage labels. Flush clean with water after washing.



**Quality Standards** Environmental products are certificated to BS EN ISO



**Tools** Chalk, Hammer drill, 10mm masonry drill bit, Screwdriver.



**PPE** Always wear appropriate PPE equipment and follow safety guidelines.

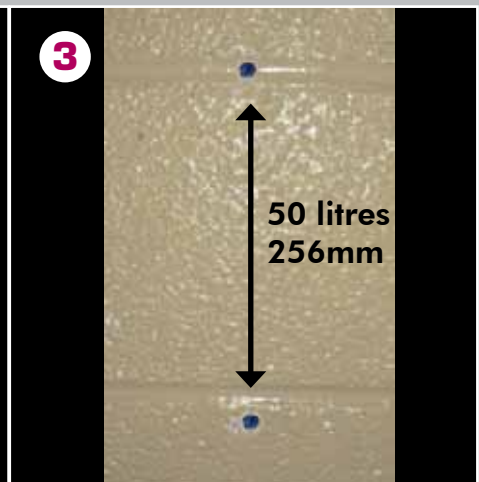
## Marking out holes



1 Established the height you wish to mount the bin.



2 If you have the 30 litre bin drill 2 x 10mm holes one vertically above the other 256mm apart from centre to centre.



3 If you have the 50 litre bin drill 2 x 10mm holes one vertically above the other 256mm apart from centre to centre.

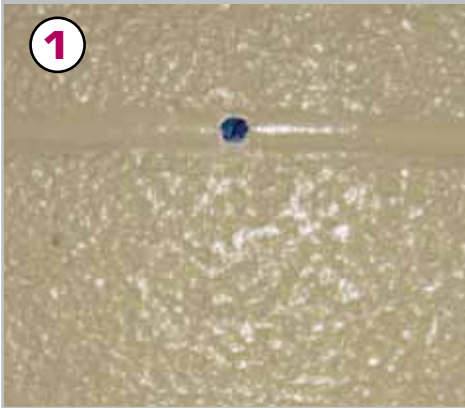
### Contents:



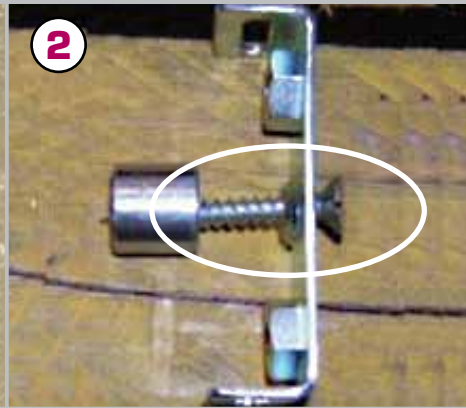
### From left to right:

- 2 x hole plugs
- 2 x metal tube spacers
- 2 x wood screws
- 2 x 'U' bracket
- 2 x backing plate
- 4 x 8mm machine screws

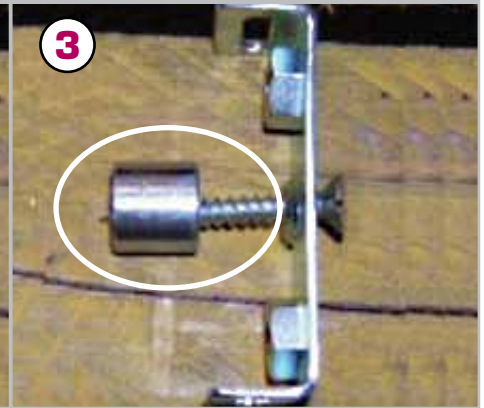
## Plugging holes and assembling brackets



Now add 1 x hole plug to each wall hole.



Insert wood screw through the centre hole of the 'U' bracket.

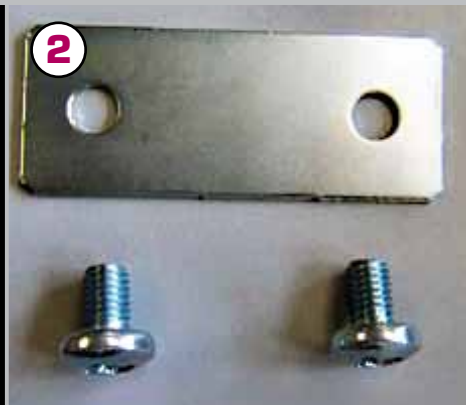


Place the metal spacer tube over the end of the screw as shown.

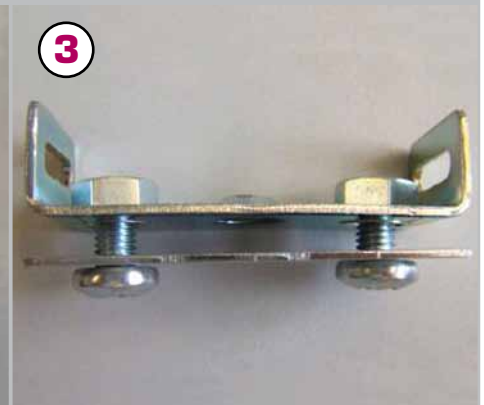
## Affixing to wall



Screw the bracket and spacer into the wall holes, repeat for second bracket.



Locate the flat metal plates x 2 and the 8mm machine screws x 4.



This is how the set-up would look without the regent bin body in the middle.

## Screwing bin to wall



Lift the bin into position lining up with the 'U' bracket on the wall.



Position up the metal plate and screw in the machine screws lightly repeat for both brackets.



When all four screws are in place tighten fully.



Telephone  
01904786861  
Fax



Email  
sales@speedystreetsolutions.com



Website

<https://www.speedystreetsolutions.com/heritage-square-litter-bin-3.html>